

THE COLLEGE OF FOOT HEALTH PRACTITIONERS

www.collegefhp.com



Est.1996

COURSES FOR INDEPENDENT PRIVATE PRACTICE

QUALIFICATION AND
FURTHER DEVELOPMENT

DIRECT ENTRY INTO THE
ACCREDITED REGISTER



2019 PROSPECTUS

ALL COURSES

Thank you for your interest in the Diploma in Foot Health Practice

The Diploma in Foot Health Practice teaches the knowledge and skills necessary to work safely as an independent practitioner in the private sector.

Level 4 is appropriate to those who apply their knowledge in complex circumstances (as in devise and apply suitable treatments). Every patient presents with different needs, so the work is always varied and interesting.

Independence

Delivered by a strong team of successful practitioners, the training has a proven track record. This College can give you the essential confidence to run your own practice by ensuring that you acquire effective clinical skills and sound business principles. The objective is to enable you to run a practice effectively, as a self-employed practitioner.

The course covers everything essential to practice. The twelve modules are interesting and easy-to-read to enable you to rapidly gain the understanding that you need. The ten-day practical follows on completion of the theory.

The College was established in 1996. More than 3,000 practitioners have trained at this College and have gone on to run successful practices.

Where does it lead?

This course leads to the

Diploma in Foot Health Practice

-enabling you to run your own business

The College of Foot Heath Practitioners offers a range of further courses that enable you to establish yourself in practice and then build on your understanding by ongoing development. Advanced courses are available to develop further skills if you wish to add to the options you can offer your clients.

Limited self-catering accommodation is available on a first-come basis at just £20 per night sharing or £30 per night single occupancy. College House is just a four minute walk from the College.

FOOT HEALTH PRACTICE -FHP COURSE FAQs

Course is at Level 4: the right level for safe practice

Consists of: three theory coursebooks, 10 days of accredited practical training, lecture programme, marking and mentoring, 2 white tunics

Assessment: 50 M/C Qs in 1st practical week

Gain: DipCFHP (the Diploma in Foot Health Practice)

Cost: £2,400 incl vat (UK) – no further course costs.

12 Theory modules: 10 assignments and 2 to read

Practical: 80 hours (Mon-Fri for 2 weeks)

Lecture Programme: links theory to practical

This course assures direct entry into the Accredited Register of Foot Health Practitioners – the only government approved register for this occupation.



Optional: Affordable Starter Packs contain most of the things you need at start-up... get going quickly at the right price.

Domiciliary practice:

The College stocks portable equipment, dressings, essential fluids and surgical instruments.

Surgery set-up:

Surgery furniture, cabinets, trolleys, leg-rests
-we advise upon these larger items.

College clinics serve the local towns and this means that you learn your skills by treating real people with real foot problems. The College offers books, further courses, Masterclasses, supplies and ongoing support beyond qualification.

WHY TRAIN WITH US?

**Because this College is a specialist college
– everything we do is concerned with feet.**

We train you in every aspect of starting and running your own practice. The tutors are all practitioners and have studied further to be able to pass on their understanding effectively. The Principal is a degree Podiatrist with a lifetime in the health professions.

Every student is treated as an individual. We guide you in your coursework, and tutorial support is readily accessible throughout the course. We have vast experience in training young, mature and EC students and understand the difficulties that arise.

We specialise in training people who have a positive, mature outlook. You might have concerns that you have been out of the learning situation for a while. We understand this and offer unparalleled back-up. You will be well-supported throughout your theory, and during the practical sessions. We teach all of the skills that you need to be able to practice safely and effectively.

The College runs multi-chair clinics and you will treat a good number of patients during your training - real patients with real foot problems. This hands-on practice is accompanied by important lectures and demonstrations to give real working understanding.

Safe Scalpel Technique® is embedded within the training and is exclusive to this College. This formalised scalpel technique has been tried and proven over many years, and assures the essential skill and manual dexterity essential to safe manipulation of surgical blades. Professional drill technique is also taught in the College clinics.

The course material is formatted to prepare you for success in your own practice and is presented in such a manner as to dispel the feeling of isolation that can be experienced in distance learning. The practical training is designed to make you competent and confident in your new skills.

This is the logo of the College of Foot Health Practitioners

The College awards the Diploma in Foot Health Practice to those who successfully complete the course. They can then display the Colleges' post-nominal letters:

DipCFHP



The motto means:
'We are not led - we lead'

***This training is recognised
for direct entry into the
Accredited Register of
Foot Health Practitioners
– accredited by the
Professional Standards Authority, (an arm's length
body of the Dept of Health) that also audits the
Statutory Medical Regulators).***



This is the logo of the Alliance of Private Sector Practitioners – your professional body

A professional body is very important in helping with professional establishment and progress. Your professional body 'fights your corner' and defends you against anything that might threaten your practice. The

Alliance negotiates insurance on behalf of its members. It also puts on a programme of CPD (Continuing Professional Development) events to provide ongoing learning and practice development opportunities and publishes a quarterly Journal to keep you fully informed.

Membership of the Alliance allows you to display:
MPSPract

When listed on the public Accredited Register, you can promote yourself as **'Member of the Accredited Register of Foot Health Practitioners'**.



see: www.thealliancepsp.com

MORE REASONS

All courses offered by the College are 'mentored' – support and help with understanding is always available by telephone or email.

An optional **Two-day Course Theory Workshop** goes through the essential understanding, stopping as you wish for explanation and expansion of any point you want clarified, and there is always time to answer your own questions and for 'outside the curriculum' conversation. The programme is directed by those attending, so that you will leave the workshop knowing what *you* wanted to know.

We find that those who opt to attend a Course Theory Workshop begin the practical part of the course with greater confidence. You can hear the awkward words spoken and pick up a considerable amount of background information that will help you get the most out of your course. The workshop helps you get to know the College building, meet the Principal (who conducts the workshops) and other students who might coincidentally be in the same practical group as yourself. It also gives an opportunity to get to know the locality, learn where to park the car, find the shops, and generally familiarise yourself with the 'feel' of the place.

The College publishes a range of 'in-house' publications that distil a lifetime of experience into a good read. They cover many conditions of direct interest to Foot Health Practitioners.



The College has a range of papers and reprints of articles relevant to practice. Protocols designed to aid and guide your work are also available and handouts accompany many of the informative lectures that form part of the course.

'taking FHP seriously - doing it properly'

The Foot Health Practitioners course will allow you to run a private practice safely and competently. But many will want to take their businesses onward. The following courses are optional, but you need to know that you can go further if you wish, and when you are ready.

Professional Development Courses

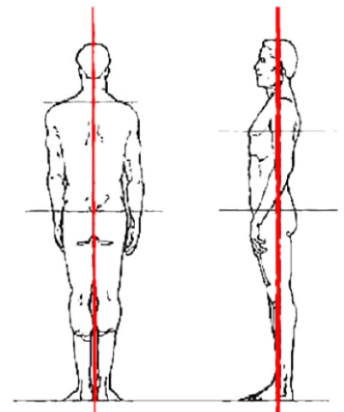
The College of Foot Health Practitioners trains in all aspects of practice development and advancement allowing you to offer more treatment options to your clients and grow your practice and professional reputation.....

Biomechanics & Orthotics

Biomechanics is concerned with the foot and lower limb, and how its structure affects the way we stand and walk.

This aspect of our work is about improvement of the posture and alignment of the joints to reduce the rate of wear of the cartilage and joint surfaces. Orthoses are the means by which we make the differences that each individual needs, so the best orthoses are bespoke - produced to prescription – in the same way as an optical laboratory makes a pair of glasses to the prescription of an Optician.

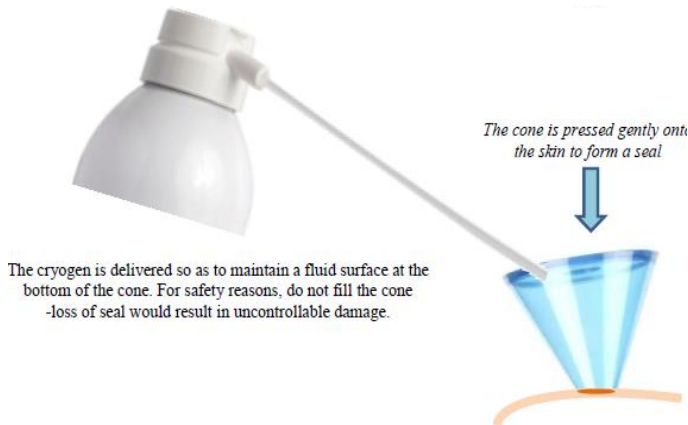
- 10 modules
- 1 day practical
- a multichoice exam leads to award of:
DipBMec – the Diploma in Biomechanics, and
- 20 Continuing Professional Development (CPD) points



'...if you learn more, you can earn more'

Verruca Management and Cryotherapy

examines the options and strategies for control of these troublesome viral lesions. This College has pioneered the non-invasive use of silver to prevent the virus replicating – silver prevents the virus from fabricating its capsid. This course looks into the virology and examines the methods of control to make sense of all of the products on the market. Cryotherapy is part of the course and is used to initiate a treatment or break any stasis that might arise in a course of treatment



- **6 modules**
- **attendance at a relevant Masterclass**
- **a multichoice exam leads to award of: DipCTec – the Diploma in Cryotherapy and Verruca Management**
- **20 Continuing Professional Development (CPD) points**

Remedial Massage

Remedial massage when applied at the right time can accelerate wound healing and resolve many muscular concerns. Techniques that we can offer promote recovery from injury and address tissue loss, imbalance and weakness. The methods are applicable to the weekend gardener just as much as to the local sports club or the elite athlete.

- **10 modules**
- **1½ days practical**
- **a multichoice exam leads to award of: DipRM – the Diploma in Remedial Massage, and**
- **20 Continuing Professional Development (CPD) points**

• www.collegefhp.com

Advanced Foot Health Practice

is a further course by which we can enhance our depth of knowledge and further our understanding. The course seeks to develop practitioner discretion and add to our confidence and ability to make informed diagnoses.

- **6 modules**
- **a mentoring session**
- **an essay-style exam leads to award of: DipCFHP(Adv) – the Diploma in Advanced Foot Health Practice**
- **20 Continuing Professional Development (CPD) points**

Diploma in Diabetes

-a newly-written course that examines Diabetes mellitus, its nature, cause, progress, importance and significance for lower limb workers.

- **Level 4, essay-style qns & m/c exam,**
- **30 CPD points**

If you intend to follow any of these courses it is best if you begin them within two years of the initial FHP course for two reasons; 1. before you are prevented from doing them by becoming too busy with routine work, and 2. whilst your head is still in learning mode. These courses enable you to offer additional services to your patients and open the way to larger fees, as well as making practice more interesting and varied.

We also run a programme of 'Masterclasses' in which we cover a wide range of foot-related topics and skills. These events allow practitioners to exchange ideas and benefit from collective experience.

Many study to gain the *Higher Diploma in Foot Health Practice*, and attain an *Alliance Fellowship*.



In addition, the College organises special functions to assist practitioners. For instance, we offer First Aid days for those who like 'hands-on' training in this important subject.

tel. 0121 559 0180

FREQUENTLY ASKED QUESTIONS

Q. How long does the initial qualification course last?

A. The initial course of 12 modules and 10 practical days is designed to be completed within a year, but can be completed sooner if your circumstances or background allow - we work with you to expedite your plan.

Q. Must I have a medical background?

A. No, our courses are designed to be followed by anyone, *(from whatever previous background and experience)*, and yet contain interesting material that will almost certainly be new to you. Help and mentoring is available by telephone or email throughout the course.

Q. Is there any age limit?

A. Age is no barrier whatsoever. Students 17 to 75 have successfully studied with us.

Q. What are the entry requirements?

You must be able to read, write and speak English and have normal hand/eye co-ordination. You must be able to use Microsoft® Word® or a similar word-processing programme, unless your handwriting is clearly legible.

Q. When does the term begin - how soon can I start?

A. Immediately! When you have completed the enrolment procedure you will be ready to begin your first module. Complete the Progress Paper when ready and send it to us by email, or by post.

Q. How is the Practical Training delivered?

A. Practical Training takes place in the College clinics. Supportive tutors deliver clinical know-how as you gain experience on real patients. We teach current and proven treatments and techniques. The Principal, a podiatrist, leads a strong team of tutors who are all practitioners and practice in their own right.

Q. Am I insured whilst in training?

A. Yes. Whilst at the College you are covered by the Colleges' own insurance policies. The Alliance of Private Sector Practitioners offers full insurance for the practice of all disciplines taught at the College, and can cover you for the practice of many other disciplines at no extra cost if declared when paying your premium.

Q. Are there any hidden costs?

A. No, but you will need to consider set-up costs. A start-up range of instruments, books and materials can be purchased from the College. Food, accommodation and travel costs are your only other training expenses.

Q. Can I view the College before enrolment?

A. Yes, and this is recommended. Ring to make an appointment to view the College. Come when the clinics are running and you will be able to talk to staff and students in training and ask their direct opinion. If you come at other times you can still view the College and the course, and talk to the staff, but the clinics will not be active. We can always show you everything, and address all of your questions.

Other questions? admin@collegefhp.com or tel: 0121 559 0180

-our webpage carries a lot of information: www.collegefhp.com

We give ongoing support after qualification

HOW TO ENROL

Find the Enrolment Form on-line

Go to www.collegefhp.com and on the **HOME** page click on **COURSES & ENROLMENT→**. Download the appropriate **Enrolment Form** and read the Terms & Conditions. If you agree, then complete the forms and scan and email them, or post them to the College. The College will then contact you to confirm your enrolment, arrange payment, fix your induction or interview, or despatch your coursework.

Or 'phone the College on 0121 559 0180

Talk to a friendly administrator for guidance on how best to enrol. If you have access to a computer you can go to the College website to enter your details online – or you can do it over the 'phone.

Or, it might suit you to arrange to visit the College, have a look around, view the coursework - and you can sign-up whilst there if you wish to. We will answer any questions you might have. **Absolutely no pressure whatsoever will be put upon you to sign up, at any point.**

If you do sign-up for the course....

We will ask for a recent photograph (approximately passport sized) – and a brief CV.

Payment of fees

You are 'on the course' the instant any part of the payment is received. Payment can be made in full or you can **pay in instalments at no extra cost. If you choose this option, payment must be completed at least one month before the start of the practical training.**

Payment methods

You can pay by Credit or Debit Card, Bank Transfer, Cheque(s) or Cash - talk to the administrators.

email: admin@collegefhp.com

tel: 0121 559 0180

The College extends a genuine welcome and provides a good atmosphere in which to learn your clinical skills. All staff and tutors are fully approachable, and all students are assured of attention to their needs in accordance with our Equal Opportunities Policy.

All tutors of the College complete the College's in-house Tutor's course 'Principles of Andragogy', in addition to any other qualification they have, so that they understand how to help adults to learn effectively.

First names are used at the College. This helps to create an environment in which you can freely discuss and learn what you need to know.

ISO 9001 was first introduced in 1987 and requires organisations to do what they say they do and that they have a quality management system in place to ensure consistency and improvement, leading to high levels of performance and customer satisfaction. Certified organisations are committed to continuous improvement and are assessed annually to ensure that progress is being maintained.

We are an ISO9001:2015 Company No. 207687

HOW TO FIND US

How to find us.



WE ARE IN THE HISTORICALLY IMPORTANT 'BLACK COUNTRY' SITUATED TO THE NW OF BIRMINGHAM IN THE WEST MIDLANDS

AT THE CENTRE OF THE MOTORWAY NETWORK

EASILY ACCESSED FROM ALL PARTS OF THE COUNTRY

**RAILWAY STATION (ROWLEY REGIS)
4 MINS WALK**

**BIRMINGHAM INTERNATIONAL AIRPORT IS
45 MINS BY TAXI**

Leave M5 at Jctn 2 (Birchley Island)
It's then only one mile to Blackheath.

Follow A4034 for Blackheath and Halesowen (McDonalds on left).
Straight on through Whiteheath.

After Station Rd turn left at next traffic lights (beside Lidl), and left again into Lidl supermarket car park.

Our entrance is on the main Oldbury Road that you have just travelled, at the junction with Cardale Street.

Our entrance is on the Cardale Street/Oldbury Rd corner of Lidl, -glass doors beneath metal canopy.

The College occupies the office suite above the Lidl Supermarket.

Free parking is allowed in Lidl car park for 2 hours only...

**NB: there is a £90 fine if you exceed the free period
—this is strictly enforced by Lidl's car park agents.**

**Blackheath, West Midlands
(A-Z ref: page 70 - 4B)**

**SATNAV
B65 0LG
(zero LG)**

**THE COLLEGE OF FOOT HEALTH PRACTITIONERS
Parkside House, Oldbury Road, Blackheath, West Midlands, B65 0LG**

Tel: +44(0)121 559 0180

web: www.collegefhp.com

email: admin@collegefhp.com

Registered in England and Wales Company Registration Number 04595656 VAT No. 812 5360 56

Copyright © College of Foot Health Practitioners 2019