



**THE COLLEGE OF FOOT
HEALTH PRACTITIONERS**

**COURSES FOR
INDEPENDENT
PRIVATE PRACTICE**

**-ENTRY AND
DEVELOPMENT**

**PROSPECTUS
2024**

Thank you for your interest in the Diploma in Foot Health Practice

The Diploma in Foot Health Practice teaches the knowledge and skills necessary to work as an independent practitioner in the private sector.

Level 4 is appropriate to those who make their own decisions and devise and apply suitable treatments. Every patient presents with different needs, so the work is always varied and interesting.

Independence

Delivered by a strong team of successful practitioners, the training has a proven track record. This College delivers the essential confidence to run your own practice by ensuring that you acquire effective clinical skills and sound business principles. The objective is to enable you to run a practice as an independent private practitioner.

The course covers everything essential to practice. The twelve modules (ten with homework) are interesting and easy-to-read to enable you to rapidly gain the understanding that you need. The ten-day practical follows on completion of the theory, and a lecture series (exclusive to this College) joins theory to practical.

Where does it lead?

This course leads to the

Diploma in Foot Health Practice

-enabling you to run your own business

The College of Foot Health Practitioners offers initial qualification to enable you to establish yourself in practice. You can then build on your understanding by ongoing development. Advanced courses are available to develop further skills if you wish to offer further options to your clients.

Limited self-catering accommodation is available on a first-come basis. Boxroom is £30 per night or sole occupancy £40 per night. Communal lounge with TV and Wi-Fi. Fully equipped kitchen, microwave, toaster, fridge, etc. On-street parking.

College House is four-minute walk from College.

'...not chiropody - modern foot care'

What are Foot Health Practitioners?

Foot Health Practitioners are self-employed private practitioners. As a practitioner you develop your own patient caseload, determine the treatment that is needed and apply it as you see fit. A medical background is not necessary, and the terms that we use quickly become second nature with a little practice.

The care that you deliver can be arranged to fit in with your own availability and your personal circumstances. Want to work four days a week? – that's fine! Need to work afternoons only? – that's fine, too! Can't do Mondays? – that's your decision!

The course trains you to recognise, assess, advise upon, and treat a wide range of foot conditions. Many people need simple foot care to maintain mobility and quality of life. Being elderly, overweight, or diabetic increases the need, and each of these conditions is rapidly increasing in prevalence in our population. The NHS does not offer the service that FHPs provide. There is a real need for Foot Health Practitioners, and this means that there is lots of opportunity to earn a good income.

Working as an independent clinician, the Foot Health Practitioner can apply his/her skills in a wide range of settings. You may choose to visit individual clients in their own homes, attend residents of Rest Homes and Nursing Homes, or visit industrial and commercial sites for the benefit of employees. Many practitioners choose to establish their own surgery base at home or in other premises such as pharmacies, GP practices or salons to provide a reliable and responsive service to their local population.

FHP is a 'people' business. If you like working with people or seek to 're-connect' with people, this is a good way to do it.

FHPs work with other health professionals wherever necessary for the well-being of their clients, referring onwards to GPs and Podiatrists for care beyond their remit.

WHY TRAIN WITH US?

Because this College is a focused, specialist college – everything we do is concerned with feet.

We train you in every aspect of starting and running your own practice. The tutors are all practitioners and have studied further to be able to pass on their understanding effectively. The Principal is a degree Podiatrist with a lifetime in the health professions.

Every student is treated as an individual. We guide you in your coursework, and tutorial support is readily accessible throughout the course. We have vast experience in training young, mature and EC students and understand the difficulties that arise.

We specialise in training people who have a positive, mature outlook. You might have concerns that you have been out of the learning situation for a while. We understand this and offer unparalleled back-up. You will be well supported throughout your theory, and during the practical sessions. We teach all the skills that you need to practice safely and effectively.

The College runs multi-chair clinics, and you will treat a good number of patients during your training - real patients with real foot problems. This hands-on practice is accompanied by important lectures and demonstrations to give real working understanding.

Safe Scalpel Technique© is embedded within the training and is exclusive to this College. This formalised scalpel technique has been tried and proven over many years and assures the essential skill and manual dexterity vital to the safe manipulation of surgical blades. Professional drill technique is also taught in the College clinics.

The course material is formatted to prepare you for success in your own practice and is presented in such a manner as to dispel the feeling of isolation that can be experienced in distance learning. The practical training is designed to make you competent and confident.

This is the logo of the College of Foot Health Practitioners

The College provides on-going learning for continuing professional development and practice expansion. Those who successfully complete the course display the College's postnominal letters:

DipCFHP



The motto means:
'We are not led - we lead'

This training is recognised for entry into the Accredited Register of Foot Health Practitioners – accredited by the Professional Standards Authority, (an arm's length body of the Dept of Health) that also audits the Statutory Medical Regulators).



This is the logo of the Alliance of Private Sector Practitioners – your professional body

A professional body is very important in helping with professional establishment and progress. Your professional body 'fights your corner' and defends you against anything that might threaten your practice. The Alliance negotiates insurance on behalf of its members. It also puts on a programme of CPD (Continuing Professional Development) events to provide ongoing learning and practice development opportunities and publishes an online Journal to keep you fully informed.

Membership of the Alliance allows you to display:
MPSPract

When listed on the public register, you can promote yourself as '**Member of the Accredited Register of Foot Health Practitioners**'.



see: www.thealliancepsp.com

MORE REASONS

All courses offered by the College are 'mentored' – support and help with understanding is always available by telephone or email.

An optional **Two-day Course Theory Workshop** goes through the essential understanding, stopping as you wish for explanation and expansion of any point you want clarified, and there is always time to answer your questions and for 'outside the curriculum' conversation. The programme is directed by those attending, so that you will leave the workshop knowing what *you* wanted to know.

We find that those who opt to attend a Course Theory Workshop begin the practical part of the course with greater confidence. You can hear the awkward words spoken and pick up a considerable amount of background information that will help you get the most out of your course. The workshop helps you get to know the College building, meet the Principal (who conducts the workshops) and other students who might turn out to be in the same practical group as yourself. It also gives an opportunity to get to know the locality, learn where to park the car, find the shops, and generally familiarise yourself with the 'feel' of the place.

The College has a range of 'in-house' publications that distil a lifetime of experience into a good read. They cover conditions of direct interest to Foot Health Practitioners.



The College has a range of papers and reprints of articles relevant to practice. Protocols designed to aid and guide your work are also available and copious handouts accompany many of the informative lectures that form part of the course.

'taking FHP seriously -and doing it properly'

The Foot Health Practitioners course will allow you to run a private practice safely and competently. But many will want to take their businesses onward. The following courses are optional, but you need to know that you can go further if you wish, and when you are ready.

Professional Development Courses

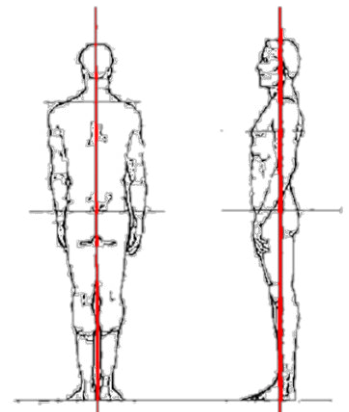
The College of Foot Health Practitioners trains in all aspects of practice development and advancement allowing you to offer more options to your clients and grow your practice and professional reputation.....

Biomechanics & Orthotics

Biomechanics is concerned with the foot and lower limb, and how its structure affects the way we stand and walk.

This aspect of our work is about improvement of the posture and alignment of the joints to reduce the rate of wear of the cartilage and joint surfaces. Orthoses are the means by which we make the differences that each individual needs, so the best orthoses are bespoke - produced to prescription – in the same way as an optical laboratory makes a pair of glasses to the prescription of an Optician.

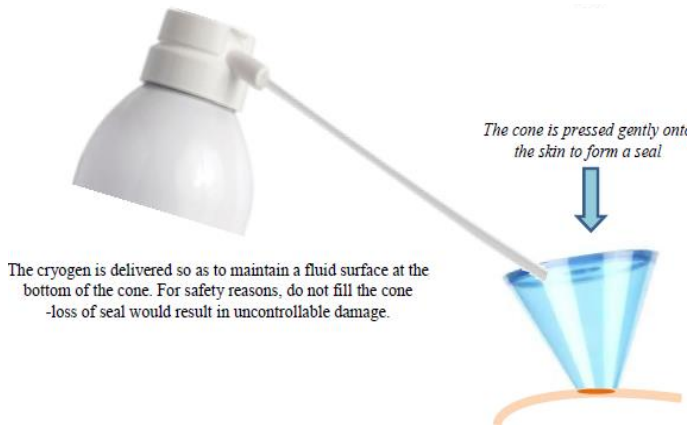
- 10 modules
- 1 day practical
- a multichoice exam leads to award of:
DipBMec – the Diploma in Biomechanics, and
- 20 Continuing Professional Development (CPD) points



'...learn more, earn more'
...know more – offer more'

Verruca Management and Cryotherapy

examines the options and strategies for control of these troublesome viral lesions. This College has pioneered the non-invasive use of silver to prevent the virus replicating – silver prevents the virus from fabricating its capsid. This course looks into the virology and examines the methods of control to make sense of all of the products on the market. Cryotherapy is part of the course and is used to initiate a treatment or break any stasis that might arise in a course of treatment.



- **6 modules**
- **attendance at a relevant Masterclass**
- **a multichoice exam leads to award of: DipCTec – the Diploma in Cryotherapy and Verruca Management**
- **20 Continuing Professional Development (CPD) points**

Remedial Massage

Remedial massage when applied at the right time can accelerate wound healing and resolve many muscular concerns. Techniques that we can offer promote recovery from injury and address tissue loss, imbalance and weakness. The methods are applicable to the weekend gardener just as much as to the local sports club or the elite athlete.

- **10 modules**
- **1 day practical** (taught by a remedial sports therapist)
- **a multichoice exam leads to award of: DipRM – the Diploma in Remedial Massage, and**
- **20 Continuing Professional Development (CPD) points**

• www.collegefhp.com

Advanced Foot Health Practice

is a further course by which we can enhance our depth of knowledge and further our understanding. The course seeks to develop practitioner discretion and add to our confidence and ability to make informed diagnoses.

- **6 modules**
- **a mentoring session**
- **an essay-style exam leads to award of: DipCFHP(Adv) – the Diploma in Advanced Foot Health Practice**
- **20 Continuing Professional Development (CPD) points**

If you intend to follow any of these courses it is best if you begin them within two years of the initial FHP course for two reasons; 1. before you are prevented from doing them by becoming too busy with routine work, and 2. whilst your head is still in learning mode. These courses enable you to offer additional services to your patients and open the way to larger fees, as well as making practice more interesting and varied.

We also run a programme of 'Masterclasses' in which we 'brainstorm' a wide range of foot-related topics and skills. These events allow practitioners to exchange ideas and benefit from collective experience.

Many gain *Alliance Fellowship* by completion of any three of the five advanced Diplomas.



In addition, the College organises special functions to assist practitioners. For instance, we offer First Aid days for those who like 'hands-on' training in this important subject.

tel. 0121 559 0180

FREQUENTLY ASKED QUESTIONS

Q. How long does the course last?

A. The course of 12 modules (10 homeworks) and 10 practical days is designed to be completed within a year, but can be done sooner if your circumstances or background allow - we work with you to achieve your goal.

Q. Must I have a medical background?

A. No, our courses are designed to be followed by anyone, (*whatever previous background and experience*), and yet contain interesting material that will almost certainly be new to you. Help and support is available by telephone or email throughout the course.

Q. Is there any age limit?

A. Age is no barrier whatsoever. We have successfully taught students 17-75.

Q. What are the entry requirements?

You must be able to read, write and speak English and have normal hand/eye co-ordination.

Q. When does the term begin - how soon can I start?

A. Immediately! When you have completed the enrolment procedure you will be ready to begin your first module. Complete the Module One Progress Paper when ready and send it to us by email, or by post.

Q. How is the Practical Training delivered?

A. Practical Training takes place in the College clinics. Supportive tutors deliver clinical know-how as you gain experience on real patients. We teach current and proven treatments and techniques. The Principal, a podiatrist, leads a strong team of tutors who are all practitioners in their own right.

Q. Am I insured whilst in training?

A. Yes. Whilst at the College you are covered by the Colleges' own insurance policies. The Alliance of Private Sector Practitioners offers full insurance for the practice of all disciplines taught at the College and can cover you for the practice of many other disciplines at no extra cost if declared when paying your premium.

Q. Are there any hidden costs?

A. No, but you will need to consider set-up costs. A range of instruments, books and materials can be purchased from the College. A start-up pack is available from as little as £295. Food, accommodation, and travel costs are your only other training expenses.

Q. Can I view the College before enrolment?

A. Yes, and this is recommended. Fix a time to view the College. If you come when the clinics are running, you can talk to staff and students in training and ask their direct opinion. If you come at other times, you can still view the College and the course, and talk to the staff, but the clinics will not be active. Please allow an hour for your visit, so that we can show you everything and address all of your questions.

Other questions? admin@collegefhp.com or tel: 0121 559 0180

-our webpage carries a lot of information: www.collegefhp.com

We give ongoing support after qualification

HOW TO ENROL

Find the Enrolment Form on-line

Go to www.collegefhp.com, download the appropriate **Enrolment Form** and read the Terms & Conditions. If you agree, then complete the forms and scan and email them, or post them to the College. The College will contact you to confirm your enrolment, arrange payment, fix your induction or interview, or despatch your coursework.

Or 'phone the College on 0121 559 0180

Talk to a friendly administrator for guidance on how best to enrol. This can be done over the 'phone. If you have access to a computer you can send us an enrolment form and your CV by email.

Or, it might suit you to arrange to visit the College, have a look around, view the coursework - and you can sign-up whilst there, if you wish to. We will answer any questions you might have. **Absolutely no pressure whatsoever will be put upon you to sign up, at any point.**

If you do sign-up for the course....

We will ask for a recent photograph (approximately passport sized) – and a brief CV.

Payment of fees

You are 'on the course' the instant any part of the payment is received. Payment can be made in full, or you can **pay in instalments at no extra cost**. If you choose this option, payment must be completed at least one month before the start of the practical training.

Payment methods

You can pay by Credit or Debit Card, Bank Transfer, Cheque(s) or Cash - talk to the administrators.

email: admin@collegefhp.com tel: 0121 559 0180

The College extends a genuine welcome and provides a good atmosphere in which to learn your clinical skills. All staff and tutors are fully approachable, and all students are assured of attention to their needs in accordance with our Equal Opportunities Policy.

All tutors of the College complete the College's in-house Tutor's course 'Principles of Andragogy', in addition to any other qualification they have, so that they understand how to help adults to learn effectively.

First names are used at the College. This helps to create an environment in which you can freely discuss and learn what you need to know.

HOW TO FIND US

How to find us.



WE ARE IN THE HISTORICALLY IMPORTANT 'BLACK COUNTRY' SITUATED TO THE NW OF BIRMINGHAM IN THE WEST MIDLANDS

AT THE CENTRE OF THE MOTORWAY NETWORK

EASILY ACCESSED FROM ALL PARTS OF THE COUNTRY

**RAILWAY STATION (ROWLEY REGIS)
4 MINS WALK**

**BIRMINGHAM INTERNATIONAL AIRPORT IS
45 MINS BY TAXI**

Leave M5 at Jctn 2 (Birchley Island) - it's then only one mile to Blackheath.

Follow A4034 for Blackheath and Halesowen (McDonalds on left). Straight through Whiteheath.

After passing Station Rd turn left at next traffic lights (after Lidl), and left again into Lidl supermarket car park.

Our entrance is on the main Oldbury Road that you have just travelled, at the junction with Cardale Street.

Our entrance is on the Cardale St. with Oldbury Rd corner of Lidl, -glass doors under a metal canopy.

The College occupies the office suite above the Lidl Supermarket.

Free parking is allowed in Lidl car park for 90 minutes.

NB: there is a £90 fine if you exceed the free period – this is strictly enforced by Lidl's parking agents.

**Blackheath, West Midlands
(A-Z ref: page 70 - 4B)**

**SATNAV
B65 0LG
(zero LG)**

**THE COLLEGE OF FOOT HEALTH PRACTITIONERS
Parkside House, Oldbury Road, Blackheath, West Midlands, B65 0LG
Tel: +44(0)121 559 0180**

www.collegefhp.com email: admin@collegefhp.com

Registered in England and Wales Company Registration Number 04595656 VAT No. 812 5360 56